



CLEAN LINES & TIMELESS DESIGN



EFG Woods offers a whole family of seating with a clean, simple design and excellent seating comfort.

Choose EFG Woods when you are looking for a family of chairs for meetings or breaks, in a cohesive and sustainable design – suited to any office environment.

Woods was designed by Steinar Hindenes a few years ago, with a desire to develop a chair with excellent seating comfort and in a clean and simple design.

EFG Woods Club is a light and low armchair where the simple and clean lines follow.



KnudsenBergHindenes
DESIGNER · EFG WOODS

A SUSTAINABLE FAMILY



Just like all our products, EFG Woods and EFG Woods Club are designed and manufactured with a minimal environmental impact, and in accordance with the established Nordic furniture eco-labeling. Components mainly consist of recyclable material, all wood is FSC-certified, and we do not use any harmful chemicals. All our standard fabrics carry the EU-flower. The usage of glue is reduced in the version with stitching on the back, to further reduce the environmental impact.



ASSORTMENT

EFG Woods is available with two different back rest heights. 4-leg base or swivel base, with two different versions of optional steel armrests, round or flat. The flat armrest can be upholstered in fabric or leather. The swivel base is adjustable in height 400-495 mm, and equipped with a lockable swing mechanism. Horizontal stitching on the back as an option.



HIGH BACK, 5-STAR BASE

MEDIUM BACK, 5-STAR BASE



HIGH BACK, 4-LEG BASE

MEDIUM BACK, 4-LEG BASE

EFG Woods Club is available with solid wooden ash base or with an aluminum swivel base. Flat steel armrest is optional for the swivel version. With or without upholstery.



CLUB

MEASUREMENTS

VERSION	ARTICLE NUMBER	SEAT HEIGHT MM	ARMREST HEIGHT MM	WIDTH MM	HEIGHT MM	DEPTH MM	WEIGHT KG
HIGH BACK, 5-STAR BASE	WOODSH10 / S	400-495	-	460	1100-1205	590	18,2
HIGH BACK, 5-STAR BASE, ROUND ARM	WOODSH11 / S	400-495	635-740	500	1100-1205	590	19,2
HIGH BACK, 5-STAR BASE , FLAT ARM	WOODSH12,14,15 / S	400-495	635-740	535	1100-1205	590	19,2
MEDIUM BACK, 5-STAR BASE	WOODSM10 / S	400-495	-	460	920-1025	570	15,2
MEDIUM BACK, 5-STAR BASE, ROUND ARM	WOODSM11 / S	400-495	635-740	500	920-1025	570	16,2
MEDIUM BACK, 5-STAR BASE, FLAT ARM	WOODSM12,14,15 / S	400-495	635-740	535	920-1025	570	16,2
HIGH BACK, 4-LEG BASE	WOODSH20 / S	410	-	490	1100	620	15,2
HIGH BACK, 4-LEG BASE, ROUND ARM	WOODSH21 / S	410	667	490	1100	620	16,2
HIGH BACK, 4-LEG BASE, FLAT ARM	WOODSH22,24,25 / S	410	667	490	1100	620	16,2
MEDIUM BACK, 4-LEG BASE	WOODSM20 / S	410	-	490	915	590	7,4
MEDIUM BACK, 4-LEG BASE, ROUND ARM	WOODSM21 / S	410	667	490	915	590	10,8
MEDIUM BACK, 4-LEG BASE, FLAT ARM	WOODSM22,24,25 / S	410	667	490	915	590	10,8
CLUB, WOODEN BASE	WOODSC40	355	-	610	820	700	10,6 CLUB
SWIVEL BASE	WOODSC50	360	-	600	820	700	12,2
CLUB, SWIVEL BASE, FLAT ARM	WOODSC52,54,55	360	585	600	820	700	15,6

* ADD AN "S" TO THE ITEM NUMBER TO GET HORIZONTAL STITCHING

Horizontal stitching on the back and seat as an option on the meeting chairs.



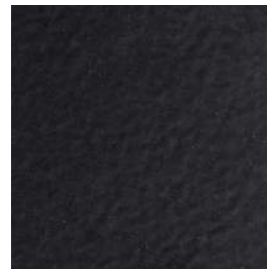
TESTS: EFG Woods and EFG Woods Club are tested according to EN 16139 level 1, EN 1728, and EN 1022. Certified in accordance with the established Nordic furniture eco-labeling. FSC-certified wood.

94 DIFFERENT KINDS OF STANDARD FABRICS ARE ONLY A FEW OPTIONS

When you choose a chair from the EFG Woods family you are presented with a seemingly endless number of standard colours, material and seat shells that will help you create a truly personalised work environment. And should you wish for an even more customised profile we also offer the opportunity to order specially adapted colours and material.

ARMREST AND BASE

STANDARD FINISHES 4-LEG BASE AND ARMRESTS



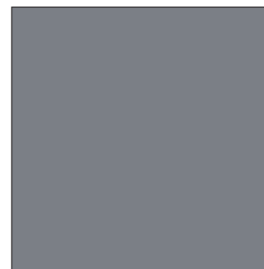
METAL - 52 BLACK



METAL - 24 WHITE

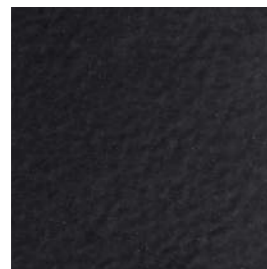


METAL - 90 CROME



METAL - 26 GREY

STANDARD FINISHES 5-STAR BASE AND ARMRESTS



METAL - 52 BLACK



METAL - 24 WHITE



METAL
- POLISHED ALUMINIUM (BASE)
- 90 CROME (ARMRESTS)

STANDARD FINISHES CLUB SWIVEL BASE



METAL
- POLISHED ALUMINIUM (BASE)
- 90 CROME (ARMRESTS)

STANDARD FINISHES CLUB WOODEN BASE



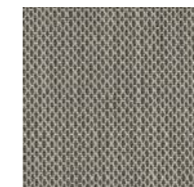
WOOD - A2 ASH WHITE 2%



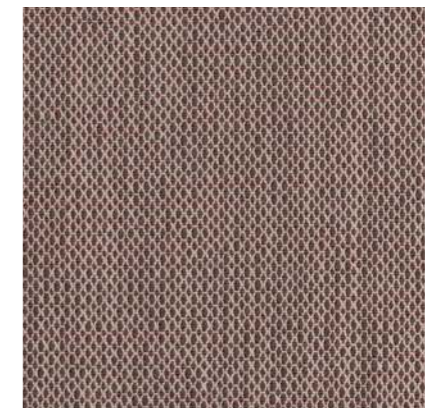
WOOD - AS ASH BLACK STAINED

SEAT, BACK AND ARMRESTS

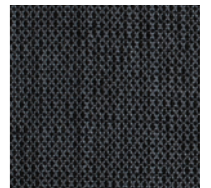
This is a small selection of our standard fabrics. Please see www.efg.info for full assortment. All our standard fabrics carry the EU-flower.



CRISS CROSS - 01101



CRISS CROSS - 01103



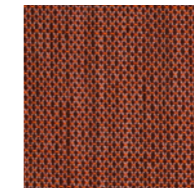
CRISS CROSS - 1401



NOTE - 60088



NOTE - 61125



CRISS CROSS - 02201



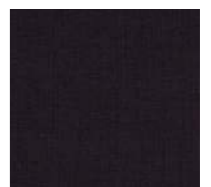
NOTE - 64019



NOTE - 66071



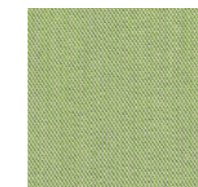
REMIX - 733



REMIX - 692



STEEL CUT - 845



STEEL CUT - 933



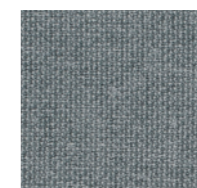
STEEL CUT - 533



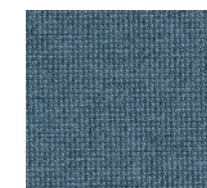
REMIX - 823



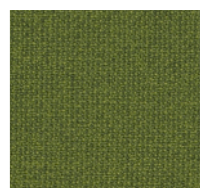
REMIX - 973



TWIST MELANGE - 60076



TWIST MELANGE - 67004



TWIST MELANGE - 68119

IT'S ALL IN THE DETAILS



FLAT METAL ARMREST
WITH UPHOLSTERY
AS AN OPTION



ROUND METAL ARMREST



ALUMINIUM MECHANISM.
12 ° TILT ANGLE.
LOCKABLE IN UPRIGHT POSITION.



ASH BASE
EFG WOODS CLUB

e|F|G